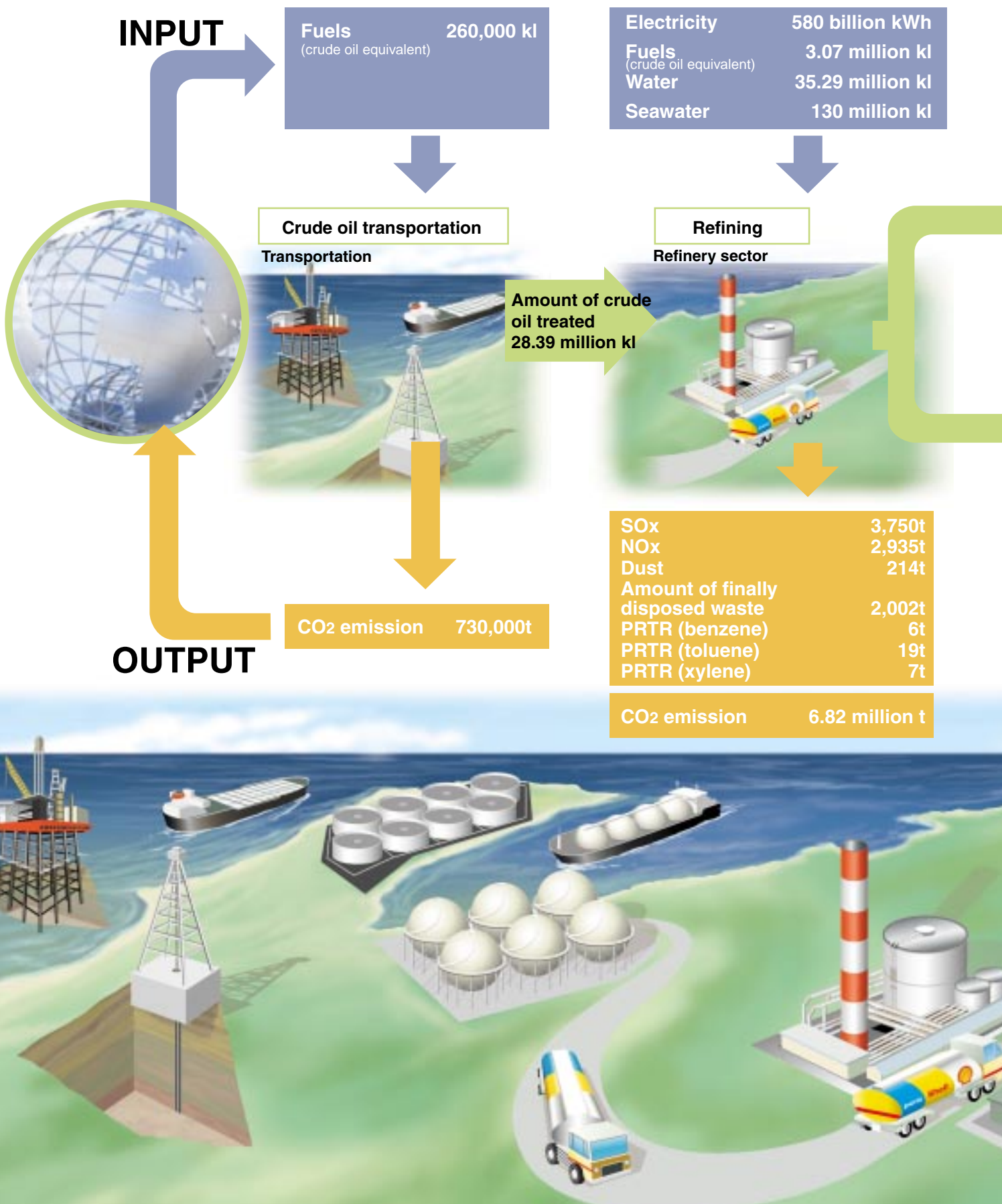




# ENVIRONMENTAL PERFORMANCE

## Environmental Protection / Resource Management



### Crude Oil Transportation

Efficiently transporting highly economical and high-quality crude oil from across the world to Japan.

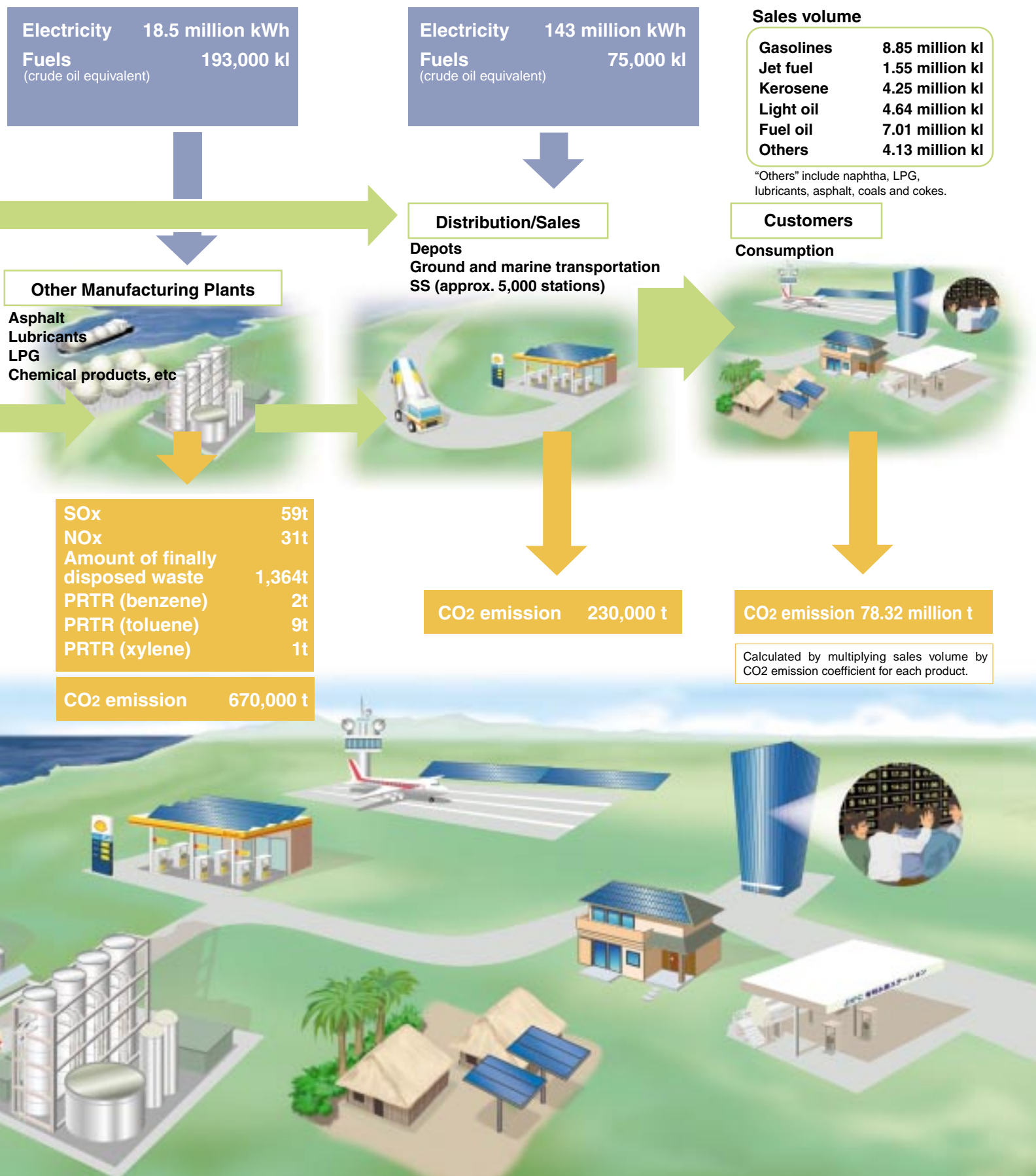
### Refinery Business

Manufacturing and processing high-quality petrochemical raw materials and petroleum products through oil refining according to a strict production plan.

### Other Manufacturing Plants

Compounding, processing, manufacturing and shipping products such as asphalt, lubricants and LPG.

# 1 Overall Picture of Environmental Loading of the Show Shell Group (2003 Results)



## Distribution/Supplies Business

Stably supplying a wide array of petroleum products from oil factories, facilities and depots via domestic ground and marine transportation.

## Petroleum Product Sales

Retailing automobile fuels, lubricants, jet/vessel fuels, industrial fuels, asphalt and LP gas.

## Environmentally Friendly Energies

Solar power generation business, distributed power source business, natural gas power generation business, hydrogen fuels, GTL (Gas To Liquids) and soil contamination prevention business