



3. Social Contribution Activities

① Ten Years at the Showa Shell Sekiyu Foundation for the Promotion of Environmental Research

Based upon the belief that the earth is irreplaceable and a healthy environment must be bequeathed to the next generation, the company supports research efforts to sustain a global environment that enables a long-term balance between the human and natural environments. The company has awarded over ¥300 million in research grants over ten years to 462 researchers, mostly young. (2004 Awardees: 22 Pioneering Research winners, 21 General Research winners, and 11 Overseas Travel winners).

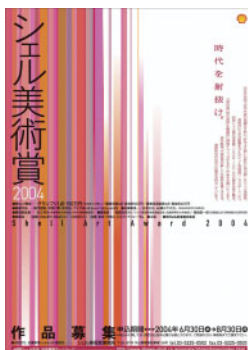
In September, the 2004 Environmental Research Awards Ceremony and a lecture marking the tenth anniversary of the founding of the Foundation for the Promotion of Environmental Research was held in Tokyo. Lecturer Yoshinori Ishii (professor at Toyama University of International Studies, professor emeritus at Tokyo University, and director of the Showa Shell Sekiyu Foundation for the Promotion of Environmental Research) spoke on the theme "The End of era of Cheap and Plentiful Oil."



② The Shell Art Prize

The Shell Art Prize/Showa Shell Modern Art Prize, which has made a major impact on the art world since its foundation in 1956, was reintroduced as the Shell Art Prize in 2003 with a goal of discovering young artists who would lead next generation.

Highly valuing works that depict the present progressive form, the Prize solicited works under the theme, "Piercing the Era." in 2004. Of 1,254 works submitted, 43 were selected for awards and were shown at an exhibit in Tokyo's Daikanyama Hills in November. The company homepage also features information on Shell Art Prize winners and their works.



③ Christmas Lectures: Inspiring Future Scientists

Showa Shell co-sponsoring the Christmas Lectures together with the Royal Institution of Great Britain. The program was launched in the UK in 1826 to introduce children to the fun of science.



The program is held every year at Christmastime in the UK, and the same lecture has been presented in Japan the following summer every year since 1990. The 2004 lecture was held in Tokyo and Kagawa Prefecture with the theme, "Voyage in Space and Time." Lecturer Dr. Monica Grady of the UK Natural History Museum told the children who attended that she would like them to continue her work and challenge themselves with solving the mysteries of science.

④ Refugee Assistance

Showa Shell has supported Refugees International Japan (RIJ) for the 26 years since the organization's founding through such acts as free provision of office space. In 2004, the company sponsored the 16th "Give a Refugee Child Hope" fundraising campaign for one week from December 7. Company representatives also attended the campaign lighting ceremony inside Tokyo Station, an annual winter event. Showa Shell Group companies will continue their support of RIJ's refugee assistance activities.



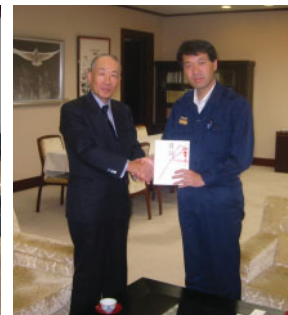
⑤ Niigata Chuetsu Earthquake

Many people and businesses, including some of Showa Shell's affiliated dealers and retailers, were affected by the Niigata Chuetsu Earthquake that hit on October 23, 2004. As one company in the region, Showa Shell made a contribution to the fastest relief possible through its assistance activities.

An internal disaster response office was set up, and communications among headquarters, the Niigata branch, and delivery points were established. The company conducted disaster response activities, giving highest priority to supplying petroleum products to the disaster areas whose lifeline had been damaged.



Inspecting a service station in the earthquake region.

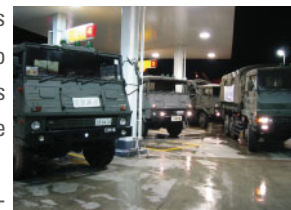


Presenting a monetary contribution to Niigata Prefecture governor Hirohiko Izumida.

Assistance Activities

■ Supplying Petroleum Products

- Shipped out emergency supplies of petroleum products (60 drums of gasoline, 50 drums of diesel oil, 30 drums of kerosene) from the Service Station in Niigata City to Kawaguchi-machi, Kitanuma-gun, which had been isolated by the earthquake. This was in response to a request by the Niigata Disaster Response Department, and the Self-Defense Forces made the deliveries.
- Supplied diesel oil for emergency generators in the hard-hit Ojiya region, upon receiving a request from Tohoku Electric Power Company.
- Shifted to maintained round-the-clock operations at Shiozawa Service Station on the Kanetsu Highway in order to supply fuel for emergency vehicles, in response to a request from the Japan Highway Public Corporation.
- Avoided supply glitches immediately following the earthquake by monitoring road closures and changing oil depot bases and routes as necessary.



■ Safety Inspections at Service Stations and Other Facilities

Showa Shell has borne the cost of airtightness tests for underground storage tanks and piping at all 126 service stations in areas subject to strong earthquakes (intensity 5 and over).

■ Supplying Relief Goods

The company responded to need with emergency supplies from the Niigata Import Terminal and the Takasaki Oil Depot. Supplies were sent to the hard-hit areas, Ojiya, Muikamachi, and Nagaoka.

500 bottles drinking water	290 blankets	
1,500 packs instant noodles	9,000 disposable pocket warmers	
90 portable burners	370 fuel canisters for portable burners	
700 batteries	80 packages diapers	
260 packages moist towelettes	160 boxes tissues	others

■ Charitable Contributions

Contributed ¥12 million to the Niigata Disaster Response Department.