

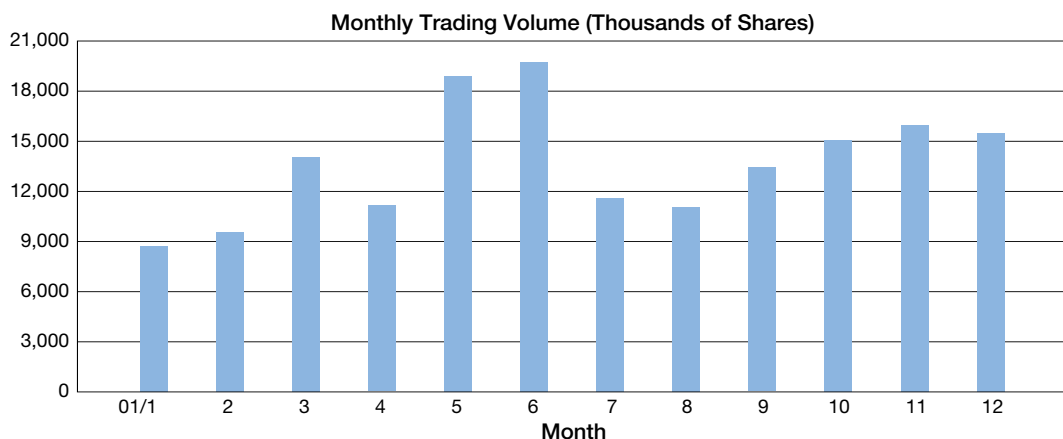
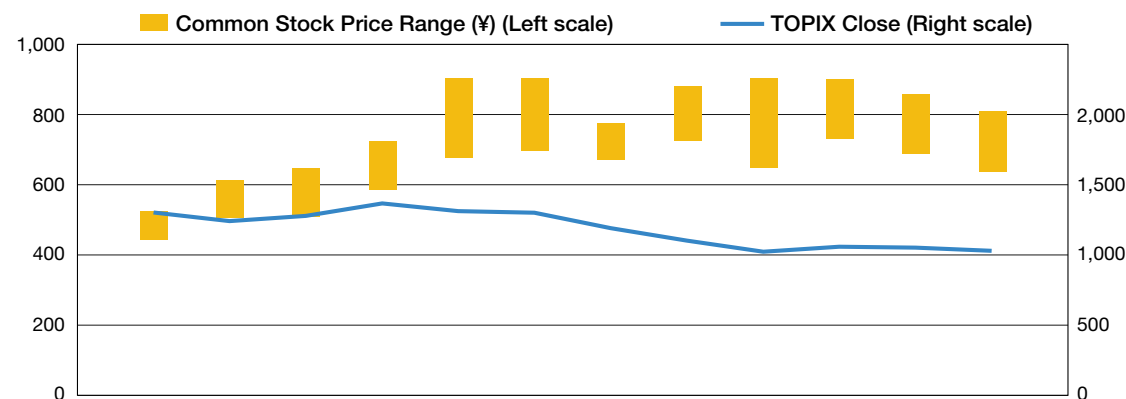
## Investor Information

**Date of Incorporation:**..... January 1, 1985  
**Total Shares Authorized:**..... 440,000,000 shares  
**Total Shares Issued and Outstanding:**.... 376,850,400 shares  
**Paid-in Capital:**..... ¥34,197,585,000  
**Number of Employees:**..... 1,105  
**Total Number of Service Stations:**..... 5,474  
**Number of Shareholders:**..... 7,275  
**Securities Listings:**..... Tokyo, Osaka, Nagoya, Fukuoka and Sapporo  
**Ticker Code:**..... 5002  
**Transfer Agent:**..... Mizuho Trust & Banking Co., Ltd.  
 1-5-1, Marunouchi, Chiyoda-ku, Tokyo 100-8240, Japan  
**Independent Auditors:**..... ChuoAoyama Audit Corporation

### Major Stockholders

	Shares owned (Thousand shares)	Percentage of total common shares outstanding
The Shell Petroleum Co., Ltd. ....	174,850	46.40%
The Dai-ichi Kangyo Bank, Ltd. ....	14,196	3.77
Japan Trustee Services Bank, Ltd. ....	13,668	3.63
Shinsei Bank, Limited.....	11,110	2.95
The Toyo Trust & Banking Co., Ltd. ....	8,825	2.34
The Chuo Mitsui Trust and Banking Company Limited .....	7,863	2.09
The Mexican Eagle Oil Co., Ltd.....	6,790	1.80
The Anglo-Saxon Petroleum Co., Ltd. ....	6,784	1.80
Trust & Custody Services Bank, Ltd. ....	6,492	1.72
The Mitsubishi Trust and Banking Corporation.....	6,024	1.60
<b>Total</b> .....	<b>256,602</b>	<b>68.10</b>

### Stock Price



(As of December 31, 2001)