

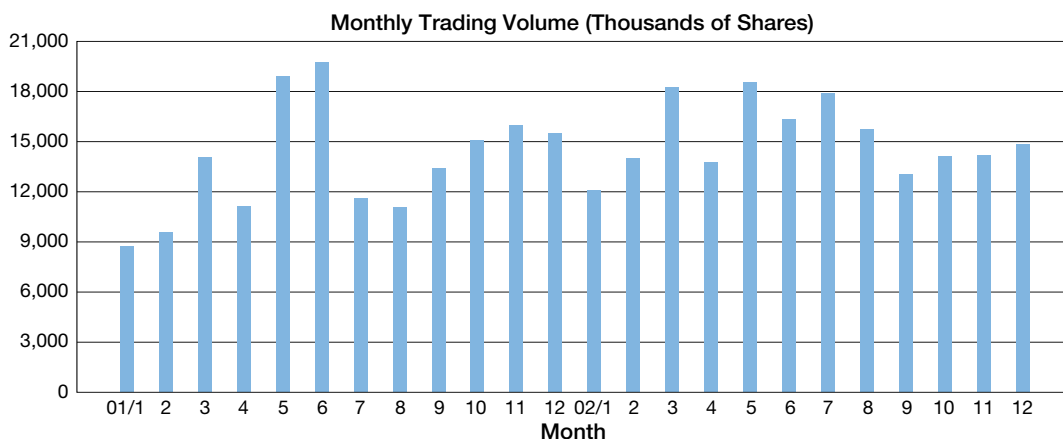
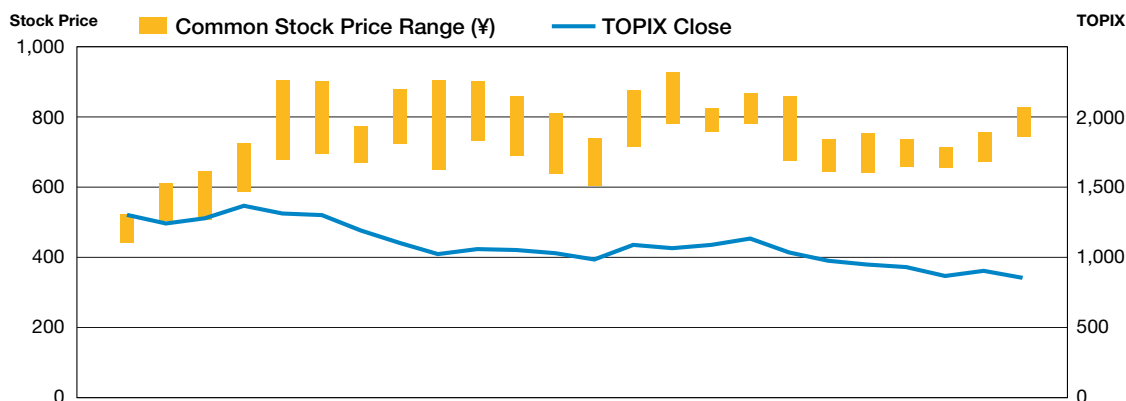
Investor Information

Date of Incorporation:..... January 1, 1985
Total Shares Authorized:..... 440,000,000 shares
Total Shares Issued and Outstanding:.... 376,850,400 shares
Paid-in Capital:..... ¥34,197,585,000
Number of Employees:..... 1,122
Total Number of Service Stations:..... 5,228
Number of Shareholders:..... 10,177
Securities Listings:..... Tokyo, Osaka, Nagoya, Fukuoka and Sapporo
Ticker Code:..... 5002
Transfer Agent:..... Mizuho Trust & Banking Co., Ltd.
 1-2-1, Yaesu, Chuo-ku, Tokyo 100-0028, Japan
Independent Auditors:..... ChuoAoyama Audit Corporation
General Shareholders' Meeting:..... March

Major Stockholders

	Shares owned (Thousand shares)	Percentage of total common shares outstanding
The Shell Petroleum Co., Ltd.	174,850.2	46.40%
Mizuho Corporate Bank, Ltd.	14,196.6	3.77
Japan Trustee Services Bank, Ltd.	13,711.8	3.64
The Master Trust Bank of Japan, Ltd.	13,628.1	3.62
Mitsui Asset Trust and Banking Co., Ltd.	11,549.6	3.06
Trust & Custody Services Bank, Ltd.	9,965.8	2.64
Shinsei Bank, Limited.....	9,610.0	2.55
The Mexican Eagle Oil Co., Ltd.	6,790.9	1.80
The Anglo-Saxon Petroleum Co., Ltd.	6,784.0	1.80
UFJ Trust Bank Limited.....	6,348.2	1.68
Total	267,435.3	70.97

Stock Price Range



(As of December 31, 2002)