

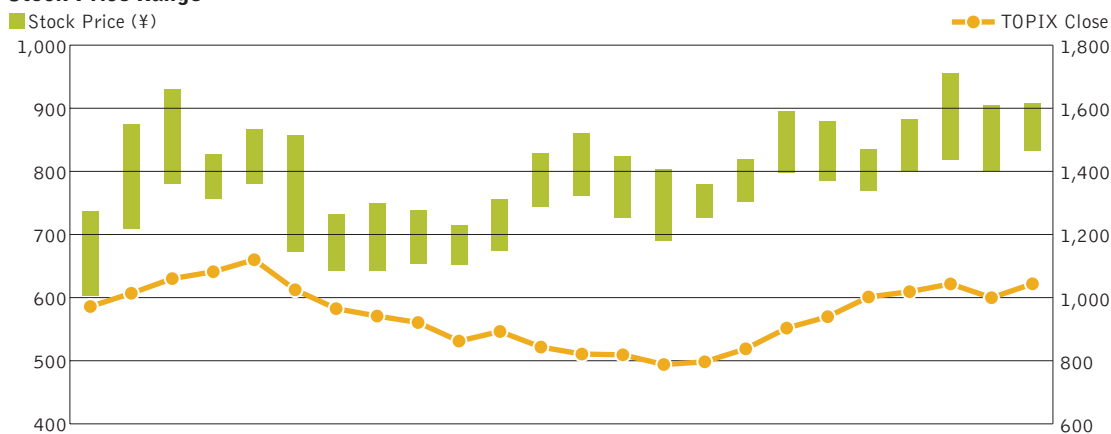
Investor Information

Date of Incorporation:January 1, 1985
Total Shares Authorized:440,000,000 shares
Total Shares Issued and Outstanding:.....376,850,400 shares
Paid-in Capital:¥34,197,585,000
Number of Employees:1,064
Total Number of Service Stations:.....5,017
Number of Shareholders:11,949
Securities Listings:Tokyo, Osaka, Nagoya, Fukuoka and Sapporo
Ticker Code:5002
Transfer Agent:Mizuho Trust & Banking Co., Ltd.
 1-2-1, Yaesu, Chuo-ku, Tokyo 103-0028, Japan
Independent Auditors:ChuoAoyama Audit Corporation
General Shareholders' Meeting:March

Major Stockholders

	Shares owned (Thousand shares)	Percentage of total common shares outstanding
The Shell Petroleum Co., Ltd.....	162,934.2	43.24%
Japan Trustee Service Bank, Limited.....	21,964.8	5.83
Shell Japan Holdings B.V.	18,700.0	4.96
The Master Trust Bank of Japan, Ltd. (Trust Account)	16,704.5	4.43
Mizuho Corporate Bank, Ltd.	14,196.6	3.77
The Chase Manhattan Bank, N.A. London.....	10,702.7	2.84
Trust & Custody Services Bank, Ltd.....	10,606.6	2.81
The Anglo-Saxon Petroleum Co., Ltd.	6,784.0	1.80
Nomura Securities Co., Ltd.....	5,628.6	1.49
Schroder Investment Management Limited	4,287.8	1.14
Total	272,509.9	72.31

Stock Price Range



Monthly Trading Volume

