

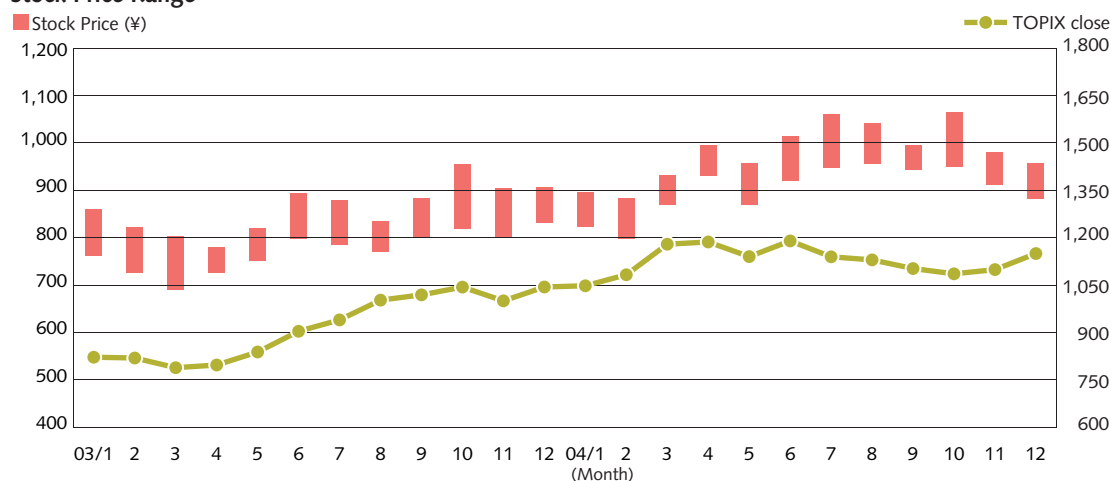
## Investor Information

**Date of Incorporation:** .....January 1, 1985  
**Total Shares Authorized:** .....440,000,000 shares  
**Total Shares Issued and Outstanding:** .....376,850,400 shares  
**Paid-in Capital:** .....¥34,197,585,000  
**Number of Employees:** .....1,068  
**Total Number of Service Stations:** .....4,853  
**Number of Shareholders:** .....23,300  
**Securities Listings:** .....Tokyo, Osaka, Nagoya, Fukuoka and Sapporo  
**Ticker Code:** .....5002  
**Transfer Agent:** .....Mizuho Trust & Banking Co., Ltd.  
 1-2-1, Yaesu, Chuo-ku, Tokyo 103-0028, Japan  
**Independent Auditors:** .....ChuoAoyama PricewaterhouseCoopers  
**General Shareholders' Meeting:** .....March

### Major Stockholders

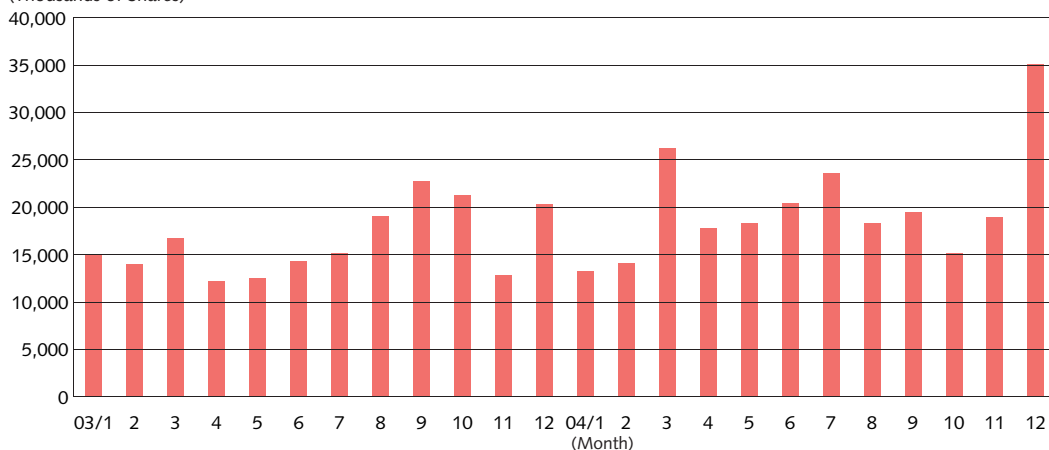
	Shares owned (Thousand shares)	Percentage of total common shares outstanding
The Shell Petroleum Co., Ltd.....	144,101.2	38.24%
Aramco Japan Holdings Company B.V.....	37,540.0	9.96
Japan Trustee Services Bank, Ltd.....	22,549.2	5.98
The Master Trust Bank of Japan, Ltd. (Trust Account) .....	17,708.1	4.70
Mizuho Corporate Bank, Ltd.....	10,196.6	2.71
Trust & Custody Services Bank, Ltd. ....	9,552.2	2.53
The Anglo-Saxon Petroleum Co., Ltd. ....	6,784.0	1.80
The Chase Manhattan Bank .....	5,885.0	1.56
State Street Bank and Trust Company .....	4,254.9	1.13
Kawasaki Kisen Kaisha, Ltd. ....	3,503.7	0.93
<b>Total</b> .....	<b>262,074.9</b>	<b>69.54</b>

### Stock Price Range



### Monthly Trading Volume

(Thousands of Shares)



## **Showa Shell Sekiyu K.K.**

Daiba Frontier Bldg., 2-3-2, Daiba, Minato-ku, Tokyo 135-8074, Japan  
Tel: +81-3-5531-5591  
<http://www.showa-shell.co.jp/>

