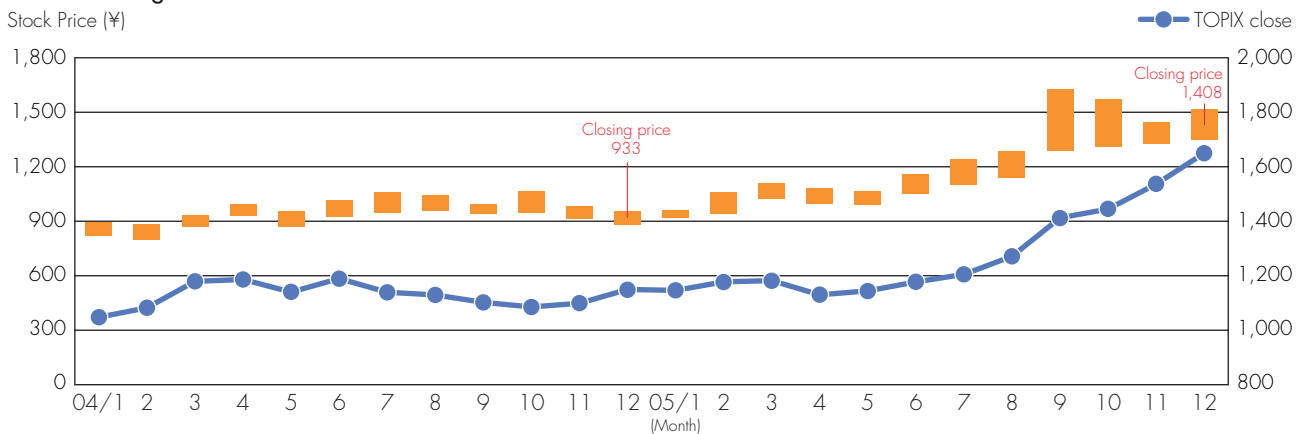


Investor Information

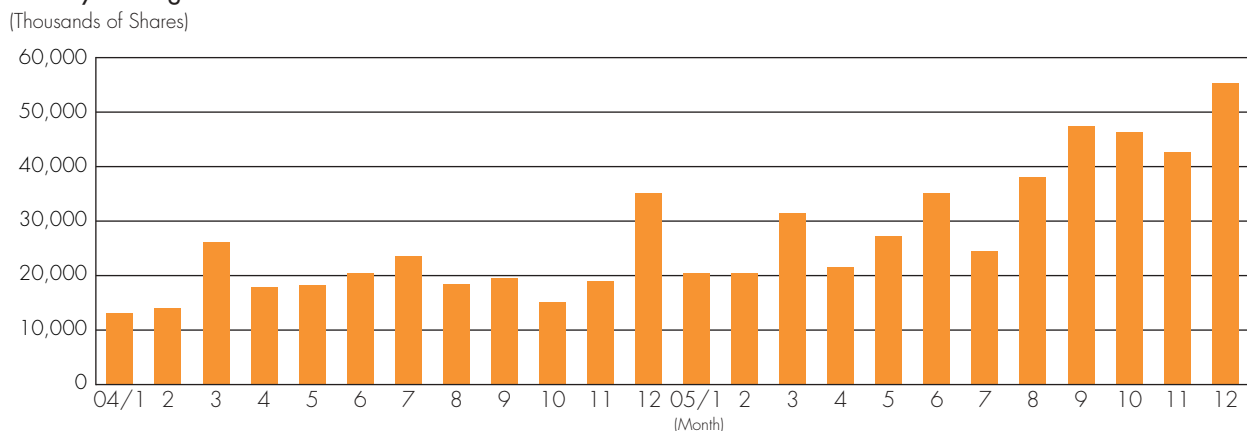
Date of Establishment:	January 1, 1985
Authorized Number of Shares:	440,000,000 shares
Number of Shares Issued:	376,850,400 shares
Paid-in Capital:	¥34,197,585,900
Number of Employees:	1,058
Total Number of Service Stations:	4,746
Number of Shareholders:	41,883
Securities Listings:	Tokyo
Ticker Code:	5002
Transfer Agent:	Mizuho Trust & Banking Co., Ltd. 1-2-1, Yaesu, Chuo-ku, Tokyo 103-0028, Japan
Independent Auditors:	ChuoAoyama PricewaterhouseCoopers
General Shareholders' Meeting:	March

Major Shareholders	Shares owned (Thousand shares)	Percentage of total common shares outstanding
The Shell Petroleum Co., Ltd.	125,261.2	33.24%
Aramco Japan Holdings Company B.V.	56,380.0	14.96
Japan Trustee Services Bank, Ltd.	29,479.6	7.82
The Master Trust Bank of Japan, Ltd. (Trust Account)	14,088.3	3.74
The Anglo-Saxon Petroleum Co., Ltd.	6,784.0	1.80
Trust & Custody Services Bank, Ltd.	5,544.3	1.47
Kawasaki Kisen Kaisha, Ltd.	3,503.7	0.93
Nomura Securities Co., Ltd.	3,053.1	0.81
Investors Bank	2,976.6	0.79
State Street Bank and Trust Company	2,833.3	0.75
Total	249,904.1	66.31

Stock Price Range



Monthly Trading Volume



Showa Shell Sekiyu K.K.

Daiba Frontier Bldg., 2-3-2, Daiba, Minato-ku, Tokyo 135-8074, Japan

Tel: +81-3-5531-5591

<http://www.showa-shell.co.jp/>



Printed in Japan with 100% recycled paper
June 2006