

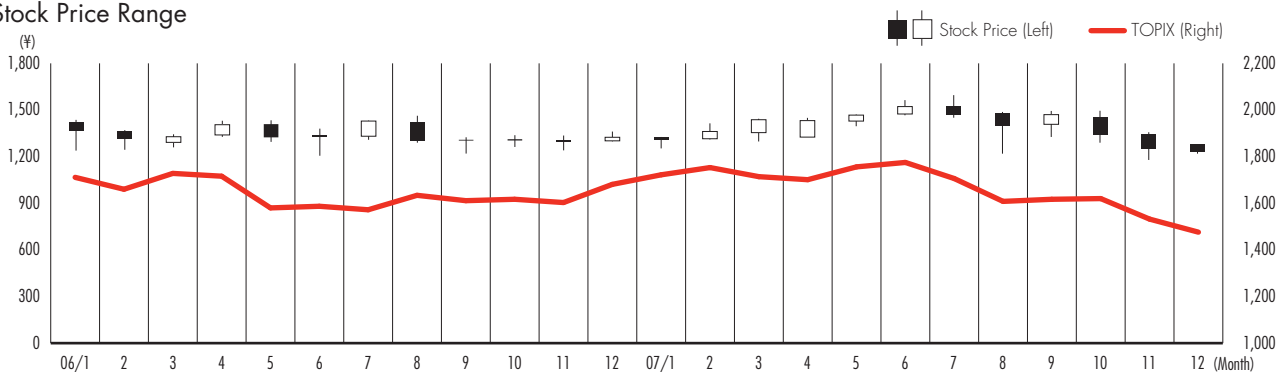
## INVESTOR INFORMATION

Years ended December 31

Date of Establishment:	January 1, 1985
Authorized Number of Shares:	440,000,000 shares
Number of Shares Issued:	376,850,400 shares
Paid-in Capital:	¥34,197,585,900
Number of Employees:	1,014
Total Number of Service Stations:	4,481
Number of Shareholders:	46,130
Securities Listings:	Tokyo Stock Exchange
Ticker Code:	5002
Transfer Agent:	Mizuho Trust & Banking Co., Ltd. 1-2-1, Yaesu, Chuo-ku, Tokyo 103-0028, Japan
Independent Auditors:	PricewaterhouseCoopers Aarata
General Shareholders' Meeting:	March

Major Shareholders	Shares owned (Thousand shares)	Percentage of total common shares outstanding
The Shell Petroleum Co., Ltd.	125,261.2	33.24 %
Aramco Japan Holdings Company B.V.	56,380.0	14.96
Japan Trustee Services Bank, Ltd.	18,385.9	4.88
The Master Trust Bank of Japan, Ltd. (Trust Account)	14,960.0	3.97
Trust & Custody Services Bank, Ltd.	9,343.3	2.48
The Anglo-Saxon Petroleum Co., Ltd.	6,784.0	1.80
Investors Bank	5,574.9	1.48
Nomura Securities Co., Ltd.	5,100.6	1.35
Kochi Shinkin Bank	4,206.5	1.12
BNP Paribas Securities (Japan) Ltd.	3,709.8	0.98
Total	249,706.3	66.26

### Stock Price Range



### Monthly Trading Volume

