

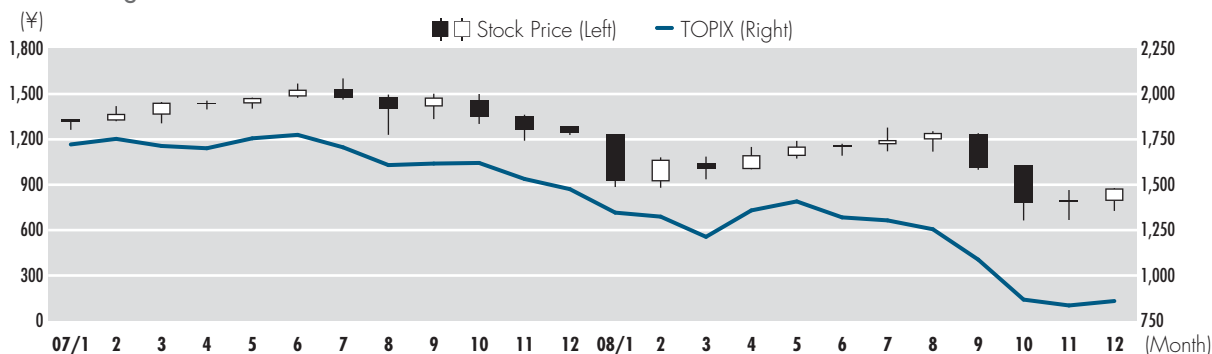
INVESTOR INFORMATION

As of 31 December 2008

Date of Establishment:	1 January 1985
Authorized Number of Shares:	440,000,000 shares
Number of Shares Issued:	376,850,400 shares
Paid-in Capital:	¥34,197,585,900
Number of Employees:	979
Total Number of Service Stations:	4,305
Number of Shareholders:	50,555
Securities Listings:	Tokyo Stock Exchange
Ticker Code:	5002
Transfer Agent:	Mizuho Trust & Banking Co., Ltd. 1-2-1, Yaesu, Chuo-ku, Tokyo 103-0028, Japan
Independent Auditors:	PricewaterhouseCoopers Aarata
General Shareholders' Meeting:	March

Major Shareholders	Number of shares held (thousand)	Percentage of total common shares outstanding
The Shell Petroleum Co., Ltd.	125,261.2	33.24%
Aramco Japan Holdings Company B.V.	56,380.0	14.96
The Master Trust Bank of Japan, Ltd. (Trust Account)	18,451.3	4.90
Japan Trustee Services Bank, Ltd. (Trust Account)	15,405.1	4.09
Trust & Custody Services Bank, Ltd. (Securities Investment Trust Account)	8,450.6	2.24
Japan Trustee Services Bank, Ltd. (Trust Account 4G)	7,322.1	1.94
The Anglo-Saxon Petroleum Co., Ltd.	6,784.0	1.80
Morgan Whitefriars Equity Derivatives	4,816.0	1.28
Kochi Shinkin Bank	4,412.0	1.17
Kawasaki Kisen Kaisha, Ltd.	3,503.7	0.93
Total	250,786.0	66.55

Stock Price Range



Monthly Trading Volume

(Thousands of Shares)

